

SAND BOX PRESCHOOL PROGRAM:

Welcome Parents and Preschoolers!!!

Sand Box is proud to welcome you to our Preschool Program for the 2009-2010 school year. We are excited that you chose to be a part of our family. Information concerning the preschool program is listed below. As always, if you have any questions or comments, please feel free to call (748-4525) or stop by my office.

Thank You

Kelly Jensen, Administrator



PRESCHOOL INFORMATION:

Class Sessions:

- Monday – Thursday classes @ 8:30 – 11:30 am
- Monday - Thursday classes @ 12:00 – 3:00 pm
- 2 day class option will be considered upon request and space availability

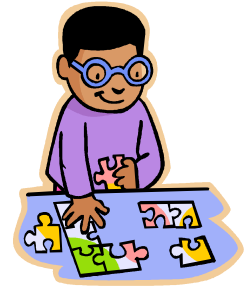
Sand Box Preschool will follow the Medford Area School District’s calendar and school closing policies.

Registration Fee:

- \$25.00/year
- Registration Fee is non-refundable

Tuition Costs / Policy:

- \$100.00/month paid by the 1st of each month.
- \$700.00 advanced yearly payment paid in full by September 15, 2009. Non-refundable (\$200.00 savings opportunity)
- Tuition is non-refundable. Registration Fee is non-refundable.
- A 30-written notice to discontinue services is required. Tuition fees must be paid through that 30-day period.



Enrollment & Enrollment Deadline:

- Enrollment Packet must be returned by September 1st to ensure a position for your child.
- Enrollment will remain open until all positions are filled.
- Enrollment requests submitted after September 1st must meet approval of the Administrator.

Please join us for our Preschool Open House on Thursday, September 3th from 4:00 – 6:00 pm



All children attending preschool classes must be accompanied by a parent outside of preschool hours. Any child in attendance without parent supervision outside of preschool hours will be billed according to the current rate schedule.